

Community Transport Services Near You

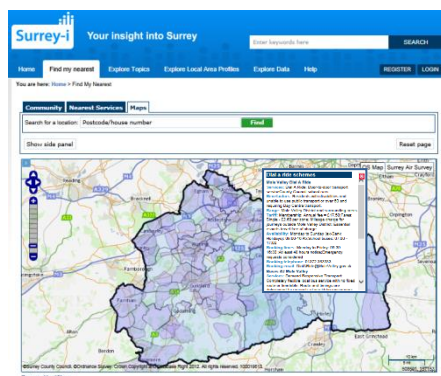
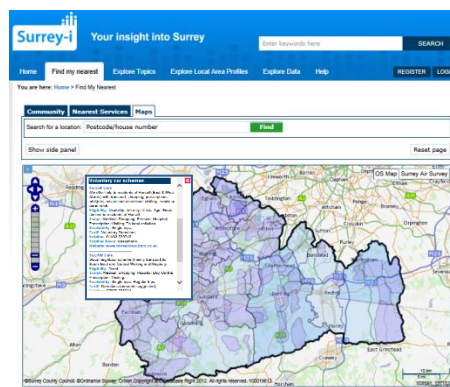
If you or someone you know has mobility issues but does not have their own car or easy access to public transport to, for example, attend a medical appointment or go shopping, the Surrey network of community transport services may be able to help. Thirteen *Dial A Ride* minibus schemes and over eighty *Voluntary Car Schemes* cover most of the county and are only a phone call away.

Coverage maps for these schemes are now available on the internet at **Surreyi**, where you can quickly find out which schemes operate where you live, together with information about the services they provide and how to contact them.

Voluntary Car Schemes

Voluntary Car Schemes provide community-based transport and related services for people who do not otherwise have access to affordable transport. Schemes are operated by volunteers for the benefit of their local communities and can, for example, help a resident to:

- *Make connections with buses or trains*
- *Attend doctor, dentist or optician appointments*
- *Visit friends or family in hospital*
- *Go shopping*
- *Visit friends*



Dial-a-Ride Schemes

Dial-a-Ride is a specialist door-to-door community transport service that caters for people with mobility problems or are otherwise disabled, and who cannot use public transport. Vehicles are adapted to cater for passengers with disabilities and are usually wheelchair accessible. *Dial-a-Ride* can, for example, help eligible passengers to:

- *Attend medical appointments*
- *Attend a day centre*
- *Go shopping*
- *Participate in social activities*

Find your nearest schemes by [clicking here](#) and providing your postcode, or by panning and zooming to the area of interest to you.



The full URL for the community transport layers on *Surreyi* is:

http://maps.surreyi.gov.uk/mysurreyi.aspx?layers=voluntary_car_schemes,drt_schemes&tab=maps